



**Buckinghamshire  
Children & Young  
People's Partnership**

Working together to reach our goals

**Integrated Commissioning  
FACT Bucks AGM, 26<sup>th</sup> September 2024**



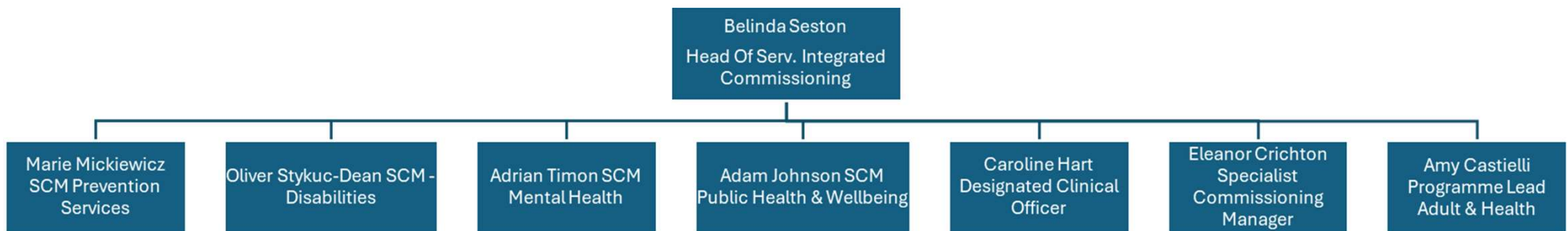
# What is Integrated Commissioning?

---

- We are a service within Buckinghamshire Council, acting on behalf of:
  - Adult Social Care
  - Children's Services
  - Public Health
  - Buckinghamshire, Oxfordshire & Berkshire West Integrated Care Board (BOB ICB)
- For residents of all ages, we work to:
  - Identify need for services
  - Secure funding for service provision
  - Design and implement services
  - Monitor outcomes, evaluate and continuously improve services

# Integrated Commissioning Team Structure

---



# Content

- What is Integrated Commissioning?
  - What do we do?
  - Structure of the team
  - Team Areas
    - Including the Designated Clinical Officer (DCO)
  - How we use your feedback
- Engagement session

# Public Health & Wellbeing Team

---

## What is Public Health?

- Public health is about helping people to stay healthy, improving health and protecting people from ill-health
- It is not just about individuals, but the whole population as well, with a great focus on addressing health inequalities

Public Health & Wellbeing Team commission services that fall under two public health domains:

- Health Protection – e.g. Testing, treating and stopping the spread of Sexually Transmitted Infections (STIs)
- Health improvement – e.g. contraception, and support to address smoking, obesity, and problematic drug and alcohol use

# Public Health & Wellbeing Team

---

## **Summary of the Public Health Services we commission:**

- Drug and Alcohol Treatment Services:
  - One Recovery Bucks (Adults – includes family service)
  - Here4YOUth (Children & Young People – includes hidden harm service)
- Integrated Sexual and Reproductive Services:
  - Sexual and Reproductive Health Clinics and Remote STI Testing
  - Sexual Health Promotion, Prevention and Outreach (Includes one to one programme for young people and training to partners)
- Integrated Healthy Lifestyle Service – Be Healthy Bucks
  - Stop smoking support
  - Adult and Child Weight Management
  - NHS Health Checks in the Community
  - Alcohol reduction support

# Public Health & Wellbeing Team

---

## **Buckinghamshire Missing Children and Return Home Interview Service**

- Delivered by Barnardo's
- Statutory Return Home Interviews following a missing episode
- Missing Interventions
- Advice and signposting to other services



# All-Age Prevention Team

---

- Focus on preventative services
  - To reduce the chance of residents requiring health or social care support
  - To ensure that emerging health needs are identified early
  - To ensure timely support is provided when needs are identified
- Services commissioned include:
  - Healthy Child Programme (0-19 years) Specialist Public Health Nursing Service
  - Children's Integrated Therapies Service
  - Community Paediatric Service
  - Health Assessments for Children Looked After
  - Community Nursing for Children with Learning Disabilities
  - FACT Bucks Parent Carer Forum
  - AES Parent Portal

# All-Age Prevention Team

---

- Current priorities
  - Implementation of AES Parent Portal in Buckinghamshire
  - Ensuring new services are being provided in line with new contracts
  - Sourcing & contracting of spot therapy provision
  - Improvement work aimed at:
    - Improving response times for EHCNA requests
    - Reducing waiting lists
    - Improving support at earlier stage
  - Embedding new ways of working across the local area
    - Continued focus on the Therapies Strategy implementation
- Challenges
  - Increasing demand
  - Staffing shortages
  - Funding pressures across local area

# All-Age Disability Team

## Delivering Services fit for our future needs

### Autism Strategy

- Developed a co-produced strategy that clearly identifies the challenges for Autistic people in Buckinghamshire and the Council's key priorities for improving the quality of life for autistic people and their families.
- Working with stakeholders to create a workplan and governance structure that drives change identified from the strategy.
- Building networks of key partners to be responsible for improvements.
- Creating a suite of resources for autistic people and their families to use so they have the right information when they need it most.

### Short Breaks for Children

- Commissioning services that support disabled children to access social opportunities in their community, build their skills and friendships.
- Enabling parents and carers of disabled children to have well needed respite from caring responsibilities.
- Commissioning Short Breaks contracts so Buckinghamshire Council has a suitable supply of overnight and activity project support for our residents.
- To develop a model that will be sustainable for the level of future needs of our residents.

### Market Sufficiency

- Working with our market to identify service development opportunities e.g. specialist support for complex physical disability or complex behavioural support for ASD etc.
- Developing a needs analysis of our current and future needs (including spend) so we know what we need and how to more efficiently create support.
- Developing a progression or pathway approach that helps individuals build skills and self-efficacy needed to transition from their current set of circumstances to more independent models of support.

# All-Age Disability Team

## Ensuring Safe and High Quality Service Provision

- Contract management of commissioned statutory services (HPFT LDA inpatient ward and Short Breaks).

- PAMMS contract management of in county residential LDA services.

- Leading on multi-organisational approach to immediate quality management of services and providers where safeguarding or quality concerns have arisen.

- Helping providers to improve their services and model their approach/training on personally centred care and meeting individual needs.

- Managing the Care (Education) Treatment Reviews for LDA Adults and Children, with an aim of exploring alternatives to hospital admission or facilitating their discharge. This involves convening the meetings, chairing cases, compiling evidence, responsible commissioner visits to acute settings etc.

- Managing the Dynamic Support Register of individuals who are at high risk of requiring acute care and support and aligning with the C(E)TR process to highlight changes in circumstance and presentation that can trigger urgent review.

- Training colleagues across the Council and BOB ICB to effectively engage with the CETR and DSR processes to achieve best outcomes for our residents.

- Working with our provider market to commission specialist complex support services to LDA residents, particularly those that may require:

- Behavioural interventions
- Support for self-injurious behaviours or suicidal ideation
- Eating Disorders
- Forensic or Offender Order compliance etc.

- These packages require a longitudinal approach with acute hospital care to plan discharge and build bespoke care in alignment with the principles of our own social work programme – the least restrictive options and those that aim towards a more independent future

# All-Age Mental Health Team

---

- Lead on the Adult Mental Health Block Contract – Services include
  - Community Mental Health Service
  - Inpatient Service
  - Out of Area Placement service
  - Memory Assessment Service
  - Early Intervention in Psychosis Service
  - Urgent Care (safe haven, street triage and Patient liaison service)
  - Talking Therapies
  - ASD/ADHD assessment & diagnostic service
  - All Age Eating Disorders service
  - Perinatal MH services

# All-Age Mental Health Team

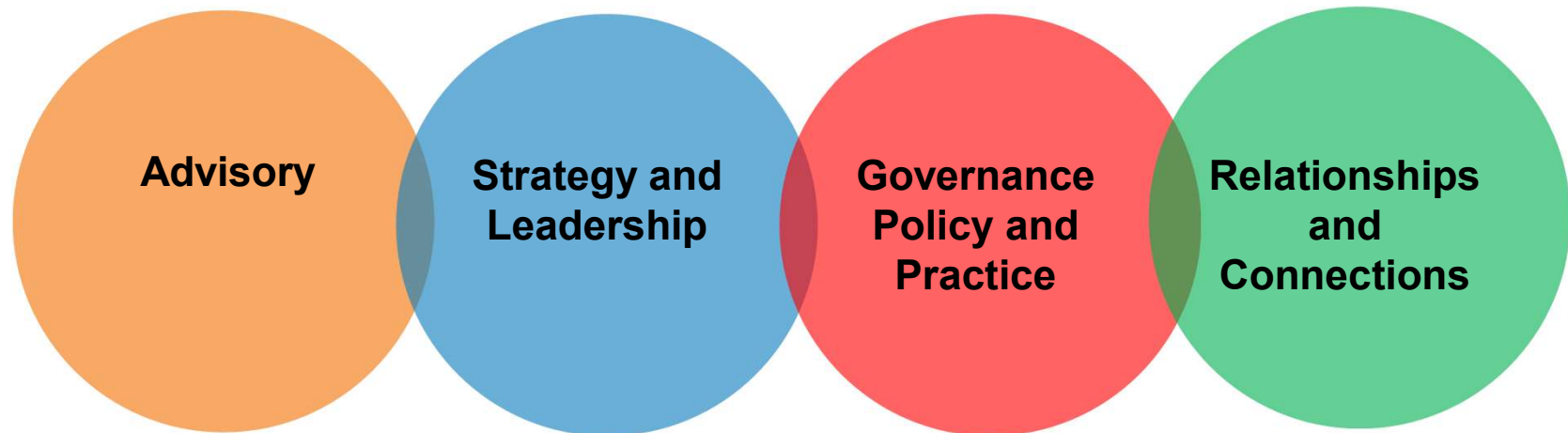
- Current CAMHS Contract Oversight :
- Pooled budget between ICB & BC & Contract management led by ICB.
- BC supports contract development, setting & monitoring KPI targets.
- Work with OHFT (service provider) to ensure the meeting of mandated national targets and lead transformational projects to meet localised need.
- Buckinghamshire CAMHS Pathways:

Single point of Access (SPA)	Looked After Children including residential homes	Dynamic Support Facilitation Team (Key Workers)
Targeted ( Getting Help)	Intellectual Disability Pathway	Mental Health Support teams
Specialist ( Getting More Help)	Neuro developmental pathway	Eating Disorders
Outreach (Getting Risk Support)	Harmful Behaviour Pathway	Reconnect: safeguarding children under 2 years

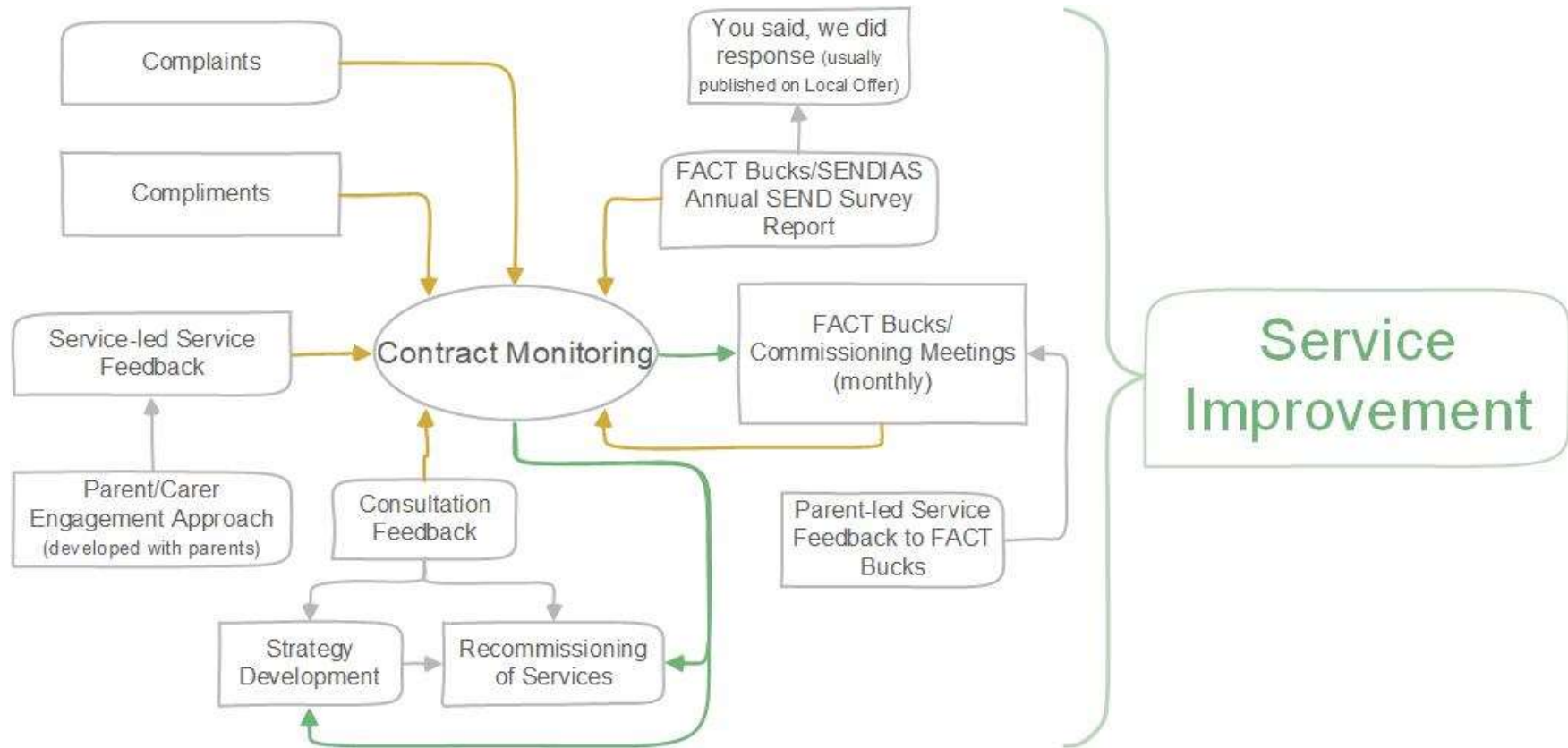
# Designated Clinical Officer for SEND (DCO)

## Foundations of the DCO role

Four Elements:



# How we use your feedback





# You said, we did

You said	We did
Your children were not 'known to service' and so needed to obtain private therapy input for EHCNA	We asked the PCF to identify parents who may have experience of this situation to feedback to us. As a result of your feedback, we have changed the way that advice given through triage is fed into plans. This will ensure that timely and relevant information and provision is included in plans, despite waiting times for full assessment.
We tend to get information and advice from other parents with children with SEND	We have asked services to consider how they reach out to parent forums across the county with information on the offer. We are using the workshop session at the end of this session as an opportunity to ask you for your views on how we can better do this.
There is a lack of specialist residential and supported living services for autistic people in county	We have engaged specialist care and support providers along with registered providers of social housing to discuss development of Buckinghamshire ASD services. These will offer a suitable environment and support offer aligned to acquiring skills and maximising the independence of our residents. So far, 7 providers have been engaged in these discussions with a view to commissioning future services.
The most frequently mentioned issue within the 150 pieces of	All feedback has been fed into the Autism Strategy Action Plan, which highlights the most sought-after areas for improvement and tracks progress for enhancing

## Slide 17

---

**MM0** I can make this look MUCH more interesting once I have more info, so put any info in here you have  
Marie Mickiewicz, 2024-09-11T13:14:39.863

**MM1** [@Oliver Stykuc-Dean] [@Adrian Timon] [@Hart, Caroline] Can you provide some examples please?  
Marie Mickiewicz, 2024-09-25T13:45:25.723

# AGM Workshop Session

---

- We hear from you via FACT Bucks that it is not easy to find information on the available support for your children and young people.
- We also hear that you feel you can rely on information passed between parent/carers from FACT Bucks or other SEND forums (e.g. social media or support groups)
- We also know from your feedback, that some of the messages across a range of offers available isn't getting through to all parents/carers who might benefit
- We want to understand how we can get messaging to you more effectively:
  1. How do you as parents/carers of children with SEND search for appropriate information?
  2. Where do you look or reach for information?
  3. How can we make information on what is available easier for you to find?